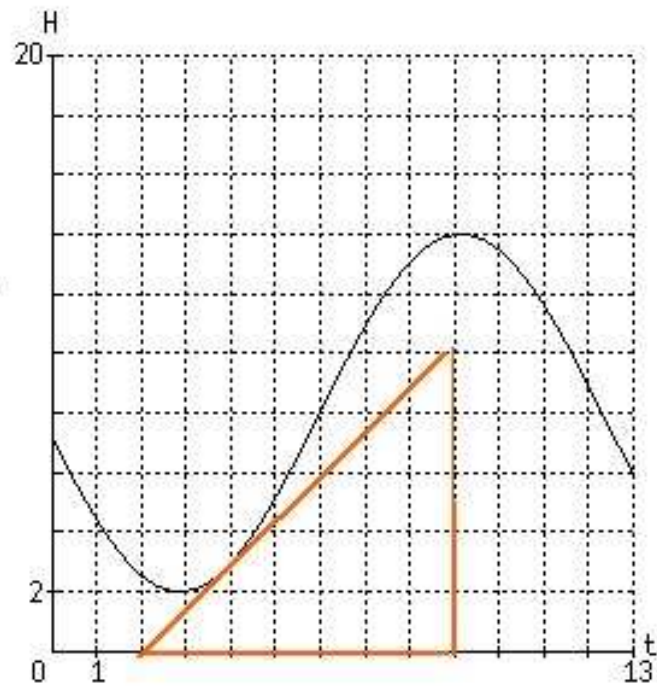


Antw. 1.

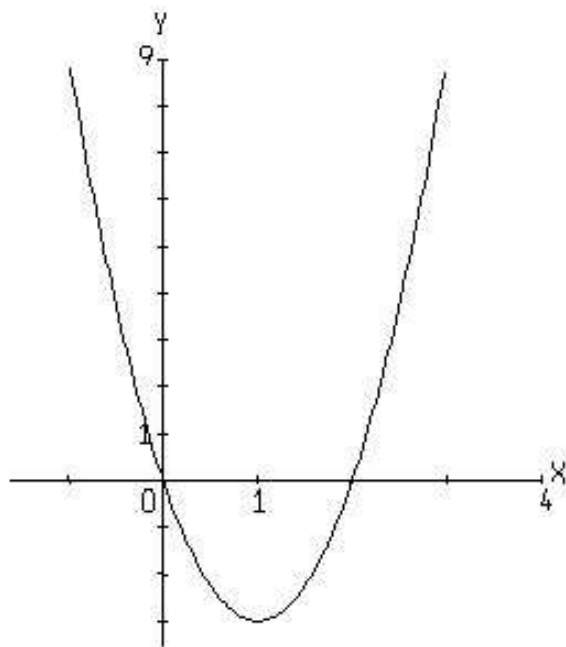
De helling van de raaklijn is ongeveer $\frac{10}{7} \approx 1,43$ m/uur.

Dat is $\frac{10}{7} \times \frac{100}{3600} \approx 0,04$ cm/s.



Antw. 2.

Je krijgt de grafiek $f(x) = 3x^2 - 6x$



Antw. 3.

$$f'(x) \approx 6,9 \cdot 2^x$$

Antw. 4.

- a. De functie $g(x)$ is dalend op $[-1\frac{1}{2}, 1]$ en op $[3\frac{1}{3}, 4]$.
- b. Omdat op $[-1, 0]$ $g'(x) = -2$ geldt:
 $g(0) = g(-1) + 1 \times (-2) = 2000 - 2 = 1998$